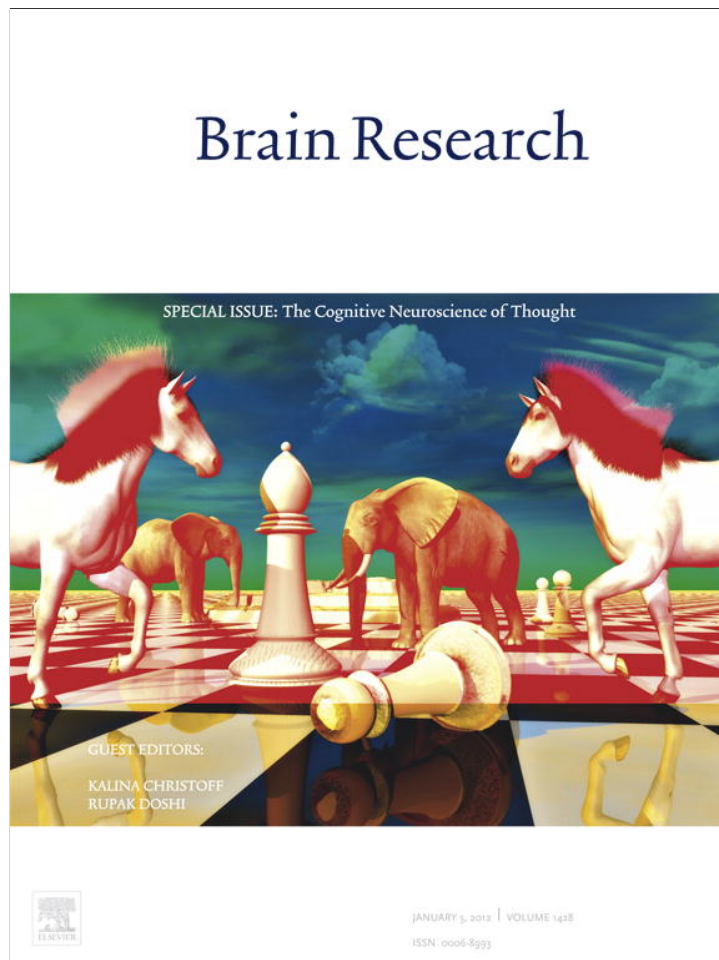


Provided for non-commercial research and education use.
Not for reproduction, distribution or commercial use.



This article appeared in a journal published by Elsevier. The attached copy is furnished to the author for internal non-commercial research and education use, including for instruction at the authors institution and sharing with colleagues.

Other uses, including reproduction and distribution, or selling or licensing copies, or posting to personal, institutional or third party websites are prohibited.

In most cases authors are permitted to post their version of the article (e.g. in Word or Tex form) to their personal website or institutional repository. Authors requiring further information regarding Elsevier's archiving and manuscript policies are encouraged to visit:

<http://www.elsevier.com/copyright>

Available online at www.sciencedirect.com

SciVerse ScienceDirect

www.elsevier.com/locate/brainresBRAIN
RESEARCH

Research Report

I remember you: A role for memory in social cognition and the functional neuroanatomy of their interaction

R. Nathan Spreng^{a,*}, Raymond A. Mar^b^aHarvard University, Department of Psychology, 33 Kirkland Street, Cambridge, MA 02138, USA^bYork University, Department of Psychology, Toronto, ON, Canada

ARTICLE INFO

Article history:

Accepted 8 December 2010

Available online 21 December 2010

Keywords:

Autobiographical memory

Theory of mind

Mentalizing

Resting-state functional connectivity

fMRI

Default mode network

ABSTRACT

Remembering events from the personal past (autobiographical memory) and inferring the thoughts and feelings of other people (mentalizing) share a neural substrate. The shared functional neuroanatomy of these processes has been demonstrated in a meta-analysis of independent task domains (Spreng, Mar & Kim, 2009) and within subjects performing both tasks (Rabin, Gilboa, Stuss, Mar, & Rosenbaum, 2010; Spreng & Grady, 2010). Here, we examine spontaneous low-frequency fluctuations in fMRI BOLD signal during rest from two separate regions key to memory and mentalizing, the left hippocampus and right temporal parietal junction, respectively. Activity in these two regions was then correlated with the entire brain in a resting-state functional connectivity analysis. Although the left hippocampus and right temporal parietal junction were not correlated with each other, both were correlated with a distributed network of brain regions. These regions were consistent with the previously observed overlap between autobiographical memory and mentalizing evoked brain activity found in past studies. Reliable patterns of overlap included the superior temporal sulcus, anterior temporal lobe, lateral inferior parietal cortex (angular gyrus), posterior cingulate cortex, dorsomedial and ventral prefrontal cortex, inferior frontal gyrus, and the amygdala. We propose that the functional overlap facilitates the integration of personal and interpersonal information and provides a means for personal experiences to become social conceptual knowledge. This knowledge, in turn, informs strategic social behavior in support of personal goals. In closing, we argue for a new perspective within social cognitive neuroscience, emphasizing the importance of memory in social cognition.

© 2010 Elsevier B.V. All rights reserved.

“We think about people and their intentions; talk about them; look for and remember them.” Daniel Gilbert, 2006

1. Introduction

Within psychology, the study of memory and the study of social cognition have largely been undertaken in parallel, with little

communication or collaboration between the two lines of research. Yet recent neuroscience evidence has moved these two topics of investigation onto intersecting paths. Specifically, there is growing evidence that the recall of personally experienced events (autobiographical memory) and inferring the mental states of others (mentalizing or theory-of-mind) share a neural substrate. This intersection has opened a new avenue of empirical investigation into the cognitive neuroscience of thought.

* Corresponding author. Fax: +1 617 496 3122.

E-mail address: nathan.spreng@gmail.com (R.N. Spreng).

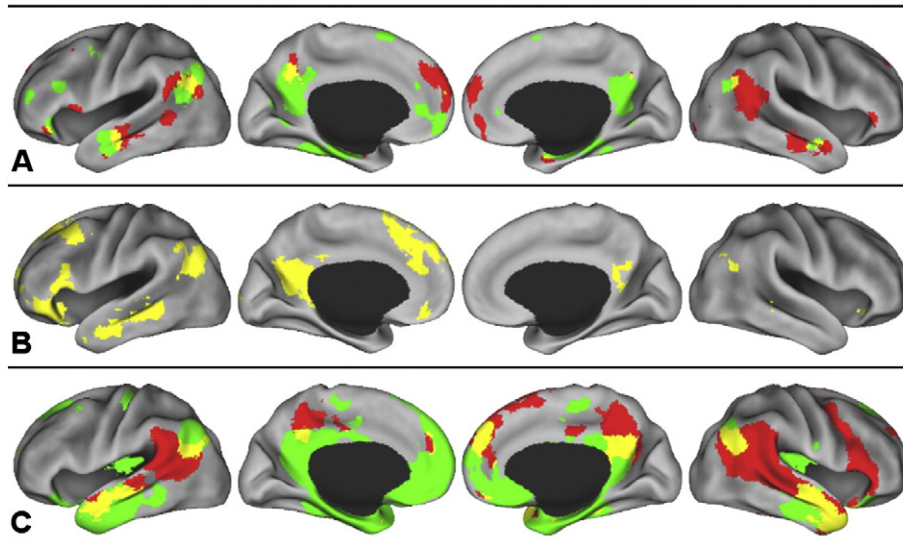


Fig. 1 – (A) Re-representation of results from the meta-analysis by [Spreng et al. \(2009\)](#). Green = autobiographical memory. Red = theory-of-mind. Yellow = overlap between autobiographical memory and theory-of-mind. Results maps were derived based on foci of interest, comprising statistically significant peak activation locations from multiple studies. Localization probability distributions for the foci are modeled at the center of 3-D Gaussian functions, where the Gaussian distributions are summed across the experiments to generate a map of inter-study consistencies that estimate the likelihood of activation for each focus. The foci were modeled using a full-width half-maximum value of 12 mm^3 . We then compared the summary of observations against a null distribution, determined through 5000 permutations of randomly generated foci identical in number to those being tested. The false discovery rate method was employed to correct for multiple comparisons at $p < 0.05$ and subjected to a cluster threshold of 100 mm^3 ([Laird, et al., 2005](#)). In total, 20 autobiographical memory and 31 theory of mind neuroimaging studies with an equivalent number of peak activation foci were included (for details, see [Spreng et al., 2009](#)). **(B)** Re-representation of results from the within-subjects multivariate analysis by [Spreng and Grady \(2010\)](#). Yellow = overlap between autobiographical memory, imagining the future, and theory-of-mind. **(C)** Results of the rsfMRI analysis from the current study. Green = Regions correlated with the left hippocampus ($p < 0.001$, uncorrected). Red = Regions correlated with the right temporoparietal junction ($p < 0.001$, uncorrected). Yellow = overlapping regions correlated with both the left hippocampus and the right temporal parietal junction ($p < 0.000001$, conjoint probability).

The idea that recollection and mentalizing share a neural basis was sparked by [Buckner and Carroll \(2007\)](#), who observed that neuroimaging studies of autobiographical memory and what is known as theory of mind appear to show similar patterns of activation. This observation, however, was not based on any systematic or empirical survey of the literature. To address this issue, [Spreng et al. \(2009\)](#) conducted a set of voxel-based quantitative meta-analyses of functional neuroimaging data ([Laird et al., 2005](#)). This method revealed an overlap between reliable patterns of activity associated with autobiographical memory and mentalizing. This overlap included the medial prefrontal and posterior cingulate cortex, frontal pole, inferior frontal gyrus, medial temporal lobe (parahippocampus, amygdala), superior temporal sulcus and middle temporal gyrus, and the angular gyrus ([Fig. 1A](#)). Importantly, regions with shared activity far outweighed the unique, non-overlapping, activations.

These meta-analyses were based on separate groups of studies, with participants performing either memory or mentalizing tasks. An essential next step was to examine whether this overlap would also be observed when the same individuals engaged in both tasks. Two subsequent neuroimaging studies took this approach and found similar areas of neural overlap,

despite using different subject populations, different MRI scanners, and different analytic methods ([Rabin et al., 2010](#); [Spreng and Grady, 2010](#)). Both studies involved the recollection of a personally experienced event and the inference of another's mental state in response to photographs.¹ Consistent with the meta-analysis, within-subject performance on matched autobiographical memory and theory-of-mind tasks resulted in a shared pattern of brain activity, including the medial prefrontal and posterior cingulate cortex, frontal pole, inferior frontal gyrus, medial temporal lobe, superior temporal sulcus, middle and inferior temporal gyri, as well as the angular gyrus ([Fig. 1B](#) shows the results of [Spreng and Grady, 2010](#)).

In this article we undertake a critical examination of where the functional neuroanatomy of autobiographical memory and mentalizing overlap, along with providing some conjecture about what this overlap might mean. Toward these aims, we draw upon the above-mentioned studies that attempted to answer this question using very different methods (i.e., meta-analysis and within-subject analysis). These are used to inform a new analysis exploiting resting-state functional connectivity.

¹ [Spreng and Grady \(2010\)](#) also examined imagining a future event in response to photographs.

Resting state functional connectivity analyses of magnetic resonance imaging data (rsfMRI) detect patterns of low-frequency neural activity during rest. These patterns are based on the correlation of spontaneous BOLD fluctuations in a given seed with all other voxels, revealing distinct and dissociable functional-anatomic networks (Biswal et al., 1995; Fox and Raichle, 2007; Vincent et al., 2008).

To examine the functional overlap between autobiographical memory and theory of mind, we took a conservative approach, selecting one seed from autobiographical memory that did not overlap with mentalizing. Similarly, the seed we selected from mentalizing did not overlap with autobiographical memory. These points of non-overlap were based on the two within-subject studies that directly contrasted autobiographical memory and mentalizing (Rabin, et al., 2010; Spreng and Grady, 2010). Subsequent comparisons have emerged as interest in these processes continues to grow (e.g. St. Jacques et al., 2011). The first seed region, the left hippocampus (LHC), is a specialized region for the binding together of information that can later be consciously retrieved or reconstructed (Moscovitch et al., 2006; Buckner, 2010). The second seed, the right temporal parietal junction (rTPJ), is reliably involved in the inference of others' mental states (Mar, 2011; Saxe and Kanwisher, 2003). The specificity of the rTPJ's function, however, is not clear; it is also involved in other attentional processes (Corbetta et al., 2008; Hein and Knight, 2008; Mitchell, 2008, 2009). Using rsfMRI, we identified the intrinsic functional network associated with each seed.

Our goal was to examine whether these two intrinsic functional networks would overlap, despite the fact that each seed was selected from non-overlapping regions that dissociated autobiographical memory from mentalizing. More importantly, we were interested in whether these potentially overlapping regions would resemble those identified using task-driven observations of brain function (i.e., meta-analysis and within-subject analysis). This approach provides a test of whether a shared neural substrate exists for these two cognitive domains. It should be emphasized, however, that because this analysis relies on correlations between low-frequency BOLD fluctuations during periods of stimulus-independent thought, the functional networks revealed for each seed cannot be associated with a particular cognitive domain. Instead, any shared intrinsic connectivity of the LHC and the rTPJ may reflect the brain's potential to integrate information across cortex in preparation for behavior (c.f. Raichle, 2010). Shared resting state functional connectivity could provide evidence that the brain is intrinsically "wired" to provide preferential access to information from memory to social cognitive processes. This intrinsic connectivity might, then, facilitate functional interaction during behavior. With the rsfMRI results situated within a theoretically motivated context based on previous empirical research, this analysis adds an important piece of information to the current discussion of how memory and mentalizing relate. In the discussion, we speculate on the significance of functional overlap.

2. Results

Although the seeds were chosen from non-overlapping regions based on previous analyses, it was important to determine that

there was no intrinsic association between the two areas we chose. Confirming this hypothesis, the correlation between the LHC and rTPJ seeds was not statistically significantly different from zero, mean $z' = -0.03$, $t(69) = -1.01$, $p > 0.30$. By choosing unrelated seeds, there is no *a priori* reason to expect that the functional networks associated with each seed would overlap in any region. In spite of this lack of association between the two seeds, we found the LHC and rTPJ to be functionally connected to a number of shared regions of the brain, at $p < 0.001$, uncorrected (Fig. 1C). The largest regions of overlap include bilateral portions of the lateral temporal and parietal lobes: specifically, posterior superior temporal sulcus and part of the angular gyrus, and bilateral superior temporal gyrus extending anteriorly to the temporal poles. We found additional overlap in medial structures, including the posterior cingulate, dorsomedial and ventral prefrontal cortex, and the amygdala. The extent of overlap was observed across a number of different thresholds from $p < 0.01$ to $p < 0.0001$ (uncorrected). Even at a relatively much higher threshold of independent FWER corrections of $p < 0.05$, overlap was observed on the lateral surfaces and in posterior cingulate cortex (Supplemental Fig. 1). These regions correspond well to those areas of overlap identified by the previous meta-analysis and within-subjects analysis (Table 1). The three different approaches converged in identifying an overlap in the superior temporal sulcus, anterior temporal lobe, lateral inferior parietal cortex (angular gyrus), posterior cingulate cortex, dorsomedial and ventral prefrontal cortex, the inferior frontal gyrus and the amygdala.

We also observed a great deal of variability in the relation between the LHC and rTPJ seeds across participants, z' SD=0.24. Fig. 2 depicts the data for three prototypical subjects, displaying BOLD time course data and corresponding whole brain conjunction images (each map thresholded at $z' > 0.20$). Some participants exhibited a positive correlation between the two regions (Fig. 2, Subject 1), and others displayed no correlation (like the overall sample; Fig. 2, Subject 2) or a negative correlation (Fig. 2, Subject 3). As Fig. 2C illustrates, the

Table 1 – Regions of conjunction. Brain regions showing conjunction across methods. MNI coordinates represent the approximate location of greatest overlap. Sources are a = meta-analysis, b = within subject fMRI analysis, and c = resting state functional connectivity analysis overlap between the left hippocampus and the right temporal parietal junction as seed regions.

Region	Approximate MNI coordinate			Source
	x	y	z	
Superior temporal sulcus	-56	-10	-16	a, b, c
	56	-6	-14	a, c
Lateral parietal cortex (angular gyrus)	-46	-64	30	a, b, c
	50	-62	26	a, b, c
Posterior cingulate cortex	0	-58	32	a, b, c
Ventromedial prefrontal cortex	2	50	-18	b, c
Dorsomedial prefrontal cortex	-4	46	22	a, b, c
Inferior frontal gyrus	-44	32	-14	a, b
Anterior temporal lobe	-46	14	-30	b, c
Amygdala	22	-4	-20	a, c

higher the correspondence between the LHC and rTPJ, the greater the overlap observed for the two functional networks. However, even in the single participant where BOLD activity in these two seeds was uncorrelated, we still see quite substantial areas of overlap. This suggests that our group-level overlap was not driven solely by those who demonstrate high synchrony between the two seeds. Indeed, even Subject 3, who exhibits a negative correlation between the LHC and rTPJ, shows regions of overlap that are consistent with the group results. The behavioral significance of this individual variability in association is unknown, however, and might prove to be a fruitful topic of future investigation.

3. Discussion

In this article we extended previous work on the neural overlap between autobiographical memory and mentalizing by approaching this question using rsfMRI. Based on previous within-subjects neuroimaging work, we selected two regions that significantly dissociated the two processes (Rabin et al., 2010; Spreng and Grady, 2010): (1) the LHC for autobiographical memory, and (2) the rTPJ for mentalizing. Our results confirmed that spontaneous low-frequency BOLD signal fluctuations in these two areas were not correlated with one another (although considerable variability across subjects was observed), empha-

sizing the independence of these two regions. In spite of this independence, the functional networks associated with each seed overlapped in a number of regions. Moreover, these regions are largely consistent with the previously observed overlap derived from meta-analysis (Fig. 1A) and that observed for within-subjects studies (Fig. 1B; Fig. 3 and Table 1 show a direct comparison). In light of the fact that this is the third unique method to confirm some shared neural substrate for both autobiographical memory and mentalizing, this shared network appears to be a reliable observation worthy of more direct study.

What does this shared set of brain region represent? How are we to interpret this overlap and similarity? For one, we do not think that autobiographical memory and mentalizing should be considered identical in any way. Although we have observed an overlap, there are also a great number of non-overlapping regions, and the two cognitive processes entail some obvious differences. One possible explanation of the overlap is that a single process supports both personally re-experiencing the past and inferring the mental states of another. This has been proposed by a number of other theorists, with this underlying process taking the form of self-projection (Buckner and Carroll, 2007; Mitchell, 2009) or scene-construction (Hassabis and Maguire, 2007), for example. While such an explanation is possible, it is by no means necessary. It is completely possible for a single region to serve different functions depending upon the co-activated regions and the

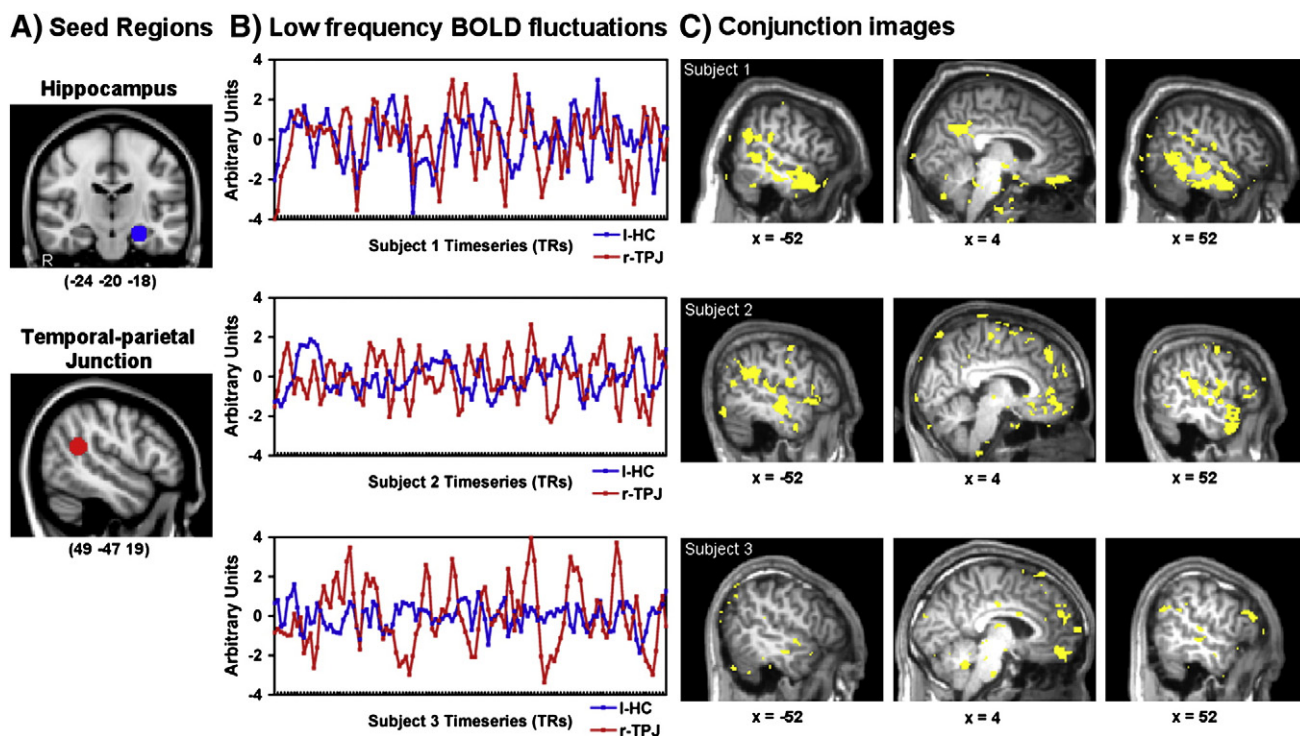


Fig. 2 – (A) Resting-state functional connectivity seed regions are depicted in the left hippocampus and right temporal parietal junction. (B) Three subjects' low frequency BOLD fluctuations for the LHC and rTPJ are shown over 120 timepoints. (C) Individual subject conjunction images show voxels that are correlated with both the LHC and rTPJ at $z' > 0.20$ for each. The top row shows a high degree of correspondence between hippocampal and rTPJ low frequency fluctuations ($z' = 0.22$) and a conjunction of functional connectivity in the midline and lateral structures. The middle row depicts a single subject with a null correlation similar to that as the population average ($z' = -0.03$) and corresponding conjunction image. The third row depicts an out of phase relationship between the hippocampus and rTPJ BOLD signal fluctuations ($z' = -0.24$) and corresponding voxels that are positively correlated with each seed. Note the difference in lateral temporal lobe activity.

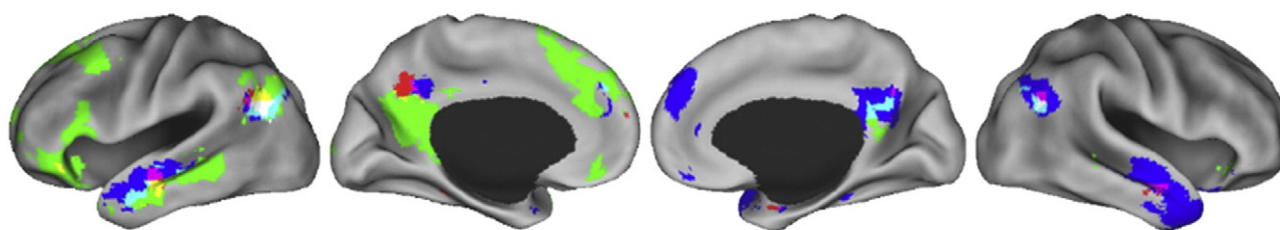


Fig. 3 – A “conjunction of conjunctions” across studies displaying the areas of overlap identified by the three separate analyses. Red = meta-analysis overlap of autobiographical memory and theory of mind. Green = task-evoked within-subject overlap of autobiographical memory, prospection and theory of mind. Blue = rsfMRI overlap of IHC and rTPJ spontaneous activity. Yellow = overlap of meta-analysis and task-evoked within-subject results. Purple = overlap of meta-analysis and rsfMRI results. Light blue = overlap of task-evoked within-subject and rsfMRI results. White = Overlap of all three methods.

task at hand (Hein and Knight, 2008; Bressler and McIntosh, 2007). The fact that the regions identified largely comprise heteromodal association cortex is consistent with the possibility of functional flexibility. Below, we speculate on the possible significance of the functional overlap, which may include the facilitation of social conceptual knowledge and the role of memory in strategic social behavior.

Many of the overlapping regions are also implicated in semantic memory (Binder et al., 2009; Martin, 2007). Both autobiographical memory and mentalizing draw upon conceptual knowledge related to actions, relationships, and the self. This alone, however, does not explain the shared patterns of functional connectivity at rest, which were observed in the absence of task-evoked brain activity. Instead, the shared pattern of resting state functional connectivity may demonstrate the neural potential for the acquisition and updating of semantic information. Semantic memory is built from experience. The functional neuroanatomy illustrated here may be critical for the transfer of information from experience to the formation of social conceptual information, which in turn guides social behavior, both implicitly and explicitly. We hypothesize that the overlap observed is a type of distributed integration zone, where information from autobiographical memory and mentalizing processes is synthesized and interacts. A network such as this could provide a means for information in memory, particularly autobiographical experiences, to be drawn upon when making social judgments, inferences or simulations.

In real-world social situations, we possess a rich mental history of past interactions that can influence our current social processing. With respect to an individual we know well or have met only once, our expectations about that person will be based on previously acquired information, which will shape how we interpret his or her behavior. An early study by Cohen (1981) provides a useful illustration of how this might take place. In this study, participants were told that a woman was either a waitress or a librarian before watching a video of her going about her day. Once the video was over, participants exhibited better recall of those behaviors and attributes that were consistent with the stereotype of either a waitress or a librarian (depending on previous knowledge). Here we see that even a tiny bit of information about a person can influence how we process his or her behavior. Real-world social perception is likely to be shaped by memory to an even larger degree, based on the fact that we possess an elaborated

personal history of interactions with individuals and not just knowledge of their occupation.

The function of memory is not simply to recall the past, but to construct flexible models of the future (Buckner, 2010; Schacter et al., 2008). The hippocampus, by connecting discrete memories, is involved in the acquisition and application of conceptual knowledge during decision-making (Kumaran et al., 2007, 2009). The adaptive advantage of formulating conceptual knowledge is that it arms one with generalizations that apply to any number of related situations, including those yet to be experienced in the future. One may learn principles or generalizations from present and past experiences and apply them to any and all relevant future experiences. This flexible process seems very well suited for navigating the complexities of the social environment, which is unstructured and labile. Moreover, the cost of making inaccurate predictions in the social domain are high, and trial and error learning in adults is unsuitably slow. Successful social navigation results in the formation of professional and intimate relationships; failure in the social domain spells social rejection and isolation.

We use our memory of social experiences to make predictions about our peers and to calibrate our own behavior accordingly. When making social judgments, about whether a person will enjoy accompanying us to a party, for example, we can draw upon a wealth of memories. In doing so, we might think back to the last party we attended together and recall how one friend made a comment that belied her annoyance at the noise and the behavior of the other guests. Choosing another guest based on this memory will help us avoid another potentially awkward situation.

Another possibility is that we could simply draw upon our semantic knowledge about this individual in order to predict his or her behavior, rather than personally re-experiencing past events. I do not need to project myself back in time and “remember” that my friend did not have a good time at the last party we attended, I can simply “know” that she does not enjoy loud parties. In other words, semantic memory may play just as large a role in social cognition as the recollection of specific events. Semantic information can be acquired much more easily, and through many more routes, than drawing upon the recollections of many specific events. We can also learn about other people indirectly from others, for example, as in the study by Cohen (1981) mentioned previously. Semantic social information

is likely to underpin the mental models of others that we employ to interpret and predict behavior. We are extremely fast and accurate in making judgments about people (Carney et al., 2007). Part of this speed comes from building efficient and accurate representations of others that then allow for understanding, cooperating with, or exploiting people's motives, feelings and thoughts. Single trial learning and knowing the source of information (and its accuracy) are critical for building individual person representations; these representations facilitate mentalizing and allow for flexible and adaptive behavior. Neuroimaging researchers have begun to tackle the topic of social semantic knowledge (Zahn et al., 2007; Simmons et al., 2010).

It is important to point out that the neuroimaging studies that reveal a neural overlap for autobiographical memory and mentalizing do not rely upon tasks that adequately capture the complex, repeated, and long-term nature of real-world social processing we have just discussed. However, work with brain-damaged patients corroborates our inferences regarding the importance of memory for successful social interactions. For example, patient M.L. has been characterized in clinical reports as having a profound impairment of autobiographical memory, but also co-occurring deficits in self-regulation. These deficits are attributed to a focal lesion to the right uncinate fasciculus, a band of white matter fibers connecting the medial temporal lobe with ventral frontal cortex (Levine et al., 1998). The inability to regulate one's own behavior impairs social cognition and strategic social navigation. Consistent with this idea, it was reported that M.L. had difficulty in knowing how to behave around family members and friends after the injury and had to relearn socially acceptable behavior (Levine et al., 1998). Over time, he was only able to assume increased parenting responsibilities under structured routines and with assistance from his wife (Levine et al., 1998). In spite of his social gains, however, he remains impaired in the self-regulation of his behavior in unstructured situations (Levine et al., 1999). Levine et al. suggest that the ability to remember the past, and the corollary of predicting the future, can facilitate the inhibition of inappropriate actions arising from immediate environmental stimuli (1999). Indeed, the ability to maintain a long view during interpersonal exchanges can facilitate the inhibition of inappropriate actions that could damage one's relationships or reputation and enhance the influence of delayed cooperative rewards on immediate decisions (Boyer, 2008). For example, one inhibits an angry outburst at a colleague due to the importance of maintaining a long-term cordial working relationship.

Work with M.L. and other amnesiacs appears to contradict a study by Rosenbaum et al. (2007), which demonstrated that two patients incapable of autobiographical memory could successfully pass a battery of mentalizing tasks (one of whom was M.L.). Upon closer examination, however, no necessary contradiction exists. Autobiographical memory might be less important for momentary, spontaneous, mental inference tasks that employ strangers as targets. This does not negate the possibility that memory of personal experiences is important for real-world situations involving repeated interactions with known individuals. This is not currently captured in the mental inference tasks employed by Rosenbaum et al. (2007), such as the Reading the Mind-in-the-Eyes Task (Baron-Cohen et al., 2001).

However, adult patient populations with profound impairments in theory of mind reasoning, such as adults with schizophrenia (Corcoran and Frith, 2003) and high functioning autism and Asperger's syndrome (Adler et al., 2010), demonstrate a shared impairment in autobiographical recollection. Distinguishing the more perceptual forms of social cognition tapped by theory-of-mind tasks from more complex real-world social interactions faced by psychiatric and brain-damaged patients is an important, and under-recognized, goal for future research. This challenge will likely necessitate the development of cognitive and clinical measures that effectively assess the integration of past experience with social reasoning.

One recent neuroimaging study of healthy adults adopted this approach, illustrating how knowledge of ourselves and our past experiences influences mental inferences. Perry et al. (2011) examined brain activity when subjects made emotional judgments of people deemed similar or dissimilar to themselves (e.g. How would Joe feel about losing his wallet?). In the case of similar others, Perry et al. (2011) found pronounced involvement of the hippocampus, but critically, only when the emotional event had occurred in the subject's own life. The authors suggest that we project our memories onto people we see as similar in order to better understand and empathize with them.

We would be remiss to discuss the overlapping regions of autobiographical memory and mentalizing without commenting on their similarity to the default network (Buckner et al., 2008). First observed to be deactivated during a number of visually demanding tasks (Shulman et al., 1997), the regions that comprise this network have since been associated with a number of cognitive functions, including narrative comprehension (Mar, 2011), prospection (Andrews-Hanna et al., 2010; Spreng et al., 2009; Spreng and Grady, 2010), forming associations (Bar et al., 2007), and stimulus-independent thought and mind-wandering (Mason et al., 2007; Christoff et al., 2009). All of these functions are consistent with our hypothesis that the regions comprise a distributed integration zone, where information from our past experiences interacts to form a working context that frames social processes and behavior. Future research will need to dissociate the specific roles of regions within the network as well as examine how regions facilitate the functional integration of information. One key region may be the posterior cingulate, which has been observed to be a central network hub (Andrews-Hanna et al., 2010; Buckner et al., 2009; Fransson and Marrelec, 2008; Hagmann et al., 2008).

To conclude, we do not only reason about others and remember our past experiences independently: more often, we use our past experiences in order to reason about others. There has been a growing trend to realize a more broad and integrated cognitive neuroscience that examines the relationships between processes rather than just the neural correlates of single processes. The relation between memory and social cognition is one topic that seems ripe for this type of investigation, with many preliminary studies showing a great deal of promise. Further work establishing the structure of this relation as well as explicit tests of updating social conceptual knowledge, will provide us with a window into how "I remember you," how I interpret your behavior, and how I act when we are together.

4. Experimental procedures

4.1. Participants

70 right-handed young adults ($M_{\text{age}}=23.5$, $SD=2.5$; 37 women) with normal or corrected-to-normal vision and no history of psychiatric, neurological, or other medical illness participated in the present study. All participants were compensated and gave written informed consent prior to participation, in accordance with the guidelines of the institutional review board of Harvard University.

4.2. MRI data collection

Brain imaging data were acquired with a 3.0T Siemens TimTrio MRI scanner with a 32-channel phased-array whole-head coil. Anatomical scans were acquired using a T1-weighted multi-echo volumetric MRI ($TR=2200$ ms; TE 's = 1.54, 3.36, 5.18, 7.01 ms; 7° flip angle; 1.2 mm isotropic voxels). The BOLD functional scan was acquired with a T2*-weighted EPI pulse sequence ($TR=3000$ ms; $TE=30$ ms; 85° flip angle; 47 axial slices parallel to the plane of the anterior commissure–posterior commissure; 3.0 mm isotropic voxels). Six minutes and 12 seconds of BOLD data were acquired in a darkened room with participants' eyes open.

4.3. MRI preprocessing and analysis

All fMRI data were preprocessed using SPM2 (Wellcome Department of Cognitive Neurology, London, UK). The first 4 volumes were excluded from analyses to allow for T1-equilibration effects. Data were corrected for slice-dependent time shifts and for head motion within and across runs using a rigid body correction. Images were then spatially normalized to the standard space of the Montréal Neurological Institute (MNI) atlas, yielding a volumetric time series resampled at 2 mm cubic voxels. After standard preprocessing, resting-state data were subjected to additional preprocessing steps described previously (Vincent et al., 2008; Van Dijk et al., 2009) and briefly here. First, a temporal low-pass filter was applied to the atlas-aligned BOLD data, retaining signal with frequency range less than 0.08 Hz. Data were then spatially smoothed with a Gaussian kernel, $FWHM=6$ mm. Then, sources of variance of non-interest were removed from the data by regressing the following nuisance variables (in addition to first temporal derivatives of each): the 6 motion parameters obtained during the motion correction procedure, the mean whole-brain signal, the mean signal from the lateral ventricles, and the mean signal from a region within the deep cerebral white matter.

To analyze whole brain patterns of intrinsic low-frequency BOLD correlations, the mean BOLD signal time-course for each participant was extracted from two seed ROIs with a radius of 8 mm in the IHC (MNI: $-24 -20 -18$) and rTPJ (MNI: $49 -47 19$). The coordinates were taken as the average of peak voxels from two direct contrasts between autobiographical memory and theory of mind (Rabin, et al., 2010; Spreng and Grady, 2010) after coordinates reported in Talairach space

(Rabin, et al., 2010) were converted to MNI using the Lancaster transformation (Laird et al., 2010; Lancaster et al., 2007). The correlation coefficient for the seeds' time-courses with the time-course for every other voxel in the brain was computed using Pearson's product-moment formula. These values were then converted to z-values using Fisher's r -to- z transformation. Whole-brain voxel-wise z-maps were then subjected to random-effects analyses to assess statistical significance across participants at the group level using t -tests performed in SPM2 (threshold $p<0.001$, uncorrected). Overlap images at thresholds of $p<0.01$, $p<0.001$, $p<0.0001$ (uncorrected) and FWER $p<0.05$ (corrected) are presented in supplementary Fig. 1. The reliability of the correlations between the two seed regions was determined with a simple t -test on the r -to- z computed correlation values. Cortical surfaces are displayed on a partially inflated brain (population average landmark surface: PALS-B12) using CARET software (Van Essen, 2005).

Supplementary materials related to this article can be found online at [doi:10.1016/j.brainres.2010.12.024](https://doi.org/10.1016/j.brainres.2010.12.024).

Acknowledgments

We thank Randy Buckner, Itimar Khan, Hesheng Liu and Tanveer Talukdar for preprocessing and rsfMRI tools, Scott Guerin for assistance with data collection, Marina Rain for assistance in preparing this manuscript, and Kathy Gerlach and Dale Stevens for their comments. We gratefully acknowledge that the resting state data were collected with support from NIH Grant MH060941 to Dan Schacter.

REFERENCES

- Adler, N., Nadler, B., Eviatar, Z., Shamay-Tsoory, S.G., 2010. The relationship between theory of mind and autobiographical memory in high-functioning autism and Asperger syndrome. *Psychiat. Res.* 178, 214–216.
- Andrews-Hanna, J.R., Reidler, J.S., Sepulcre, J., Poulin, R., Buckner, R.L., 2010. Functional-anatomic fractionation of the brain's default network. *Neuron* 65, 550–562.
- Bar, M., Aminoff, E., Mason, M., Fenske, M., 2007. The units of thought. *Hippocampus* 17, 420–428.
- Baron-Cohen, S., Wheelwright, S., Hill, J., Raste, Y., Plumb, I., 2001. The "Reading the Mind in the Eyes" Test Revised version: a study with normal adults, and adults with Asperger's syndrome or high-functioning autism. *J. Child Psychol. Psych.* 42, 241–251.
- Binder, J.R., Desai, R.H., Graves, W.W., Conant, L.L., 2009. Where is the semantic system? A critical review and meta-analysis of 120 functional neuroimaging studies. *Cer. Cortex.* 19, 2767–2796.
- Biswal, B., Yetkin, F.Z., Haughton, V.M., Hyde, J.S., 1995. Functional connectivity in the motor cortex of resting human brain using echo-planar MRI. *Magn. Reson. Med.* 34, 537–541.
- Boyer, P., 2008. Evolutionary economics of mental time travel? *Trends Cog. Sci.* 12, 219–224.
- Bressler, S.L., McIntosh, A.R., 2007. The role of neural context in large-scale neurocognitive network operations. In: Jirsa, V.K., McIntosh, A.R. (Eds.), *Springer Handbook on Brain Connectivity*. Springer, New York, pp. 403–419.

- Buckner, R.L., 2010. The role of the hippocampus in prediction and imagination. *Annu. Rev. Psychol.* 61, 27–48.
- Buckner, R.L., Carroll, D.C., 2007. Self-projection and the brain. *Trends Cog. Sci.* 11, 49–57.
- Buckner, R.L., Andrews-Hanna, J.R., Schacter, D.L., 2008. The brain's default network: anatomy, function, and relevance to disease. *Ann. NY Acad. Sci.* 1124, 1–38.
- Buckner, R.L., Sepulcre, J., Talukdar, T., Krienen, F.M., Liu, H., Hedden, T., et al., 2009. Cortical hubs revealed by intrinsic functional connectivity: mapping, assessment of stability, and relation to Alzheimer's disease. *J. Neurosci.* 29, 1860–1873.
- Carney, D.R., Colvin, C.R., Hall, J.A., 2007. A thin slice perspective on the accuracy of first impressions. *J. Res. Pers.* 41, 1054–1072.
- Christoff, K., Gordon, A.M., Smallwood, J., Smith, R., Schooler, J.W., 2009. Experience sampling during fMRI reveals default network and executive system contributions to mind wandering. *Proc. Natl Acad. Sci.* 106, 8719–8724.
- Cohen, C., 1981. Person categories and social perception: testing some boundaries of the processing effects of prior knowledge. *J. Pers. Soc. Psychol.* 40, 441–452.
- Corbetta, M., Patel, G.H., Shulman, G.L., 2008. The reorienting system of the human brain: from environment to theory of mind. *Neuron* 58, 306–324.
- Corcoran, R., Frith, C.D., 2003. Autobiographical memory and theory of mind: evidence of a relationship in schizophrenia. *Psychol. Med.* 33, 897–905.
- Fox, M.D., Raichle, M.E., 2007. Spontaneous fluctuations in brain activity observed with functional magnetic resonance imaging. *Nat. Rev. Neurosci.* 8, 700–711.
- Fransson, P., Marrelec, G., 2008. The precuneus/posterior cingulate cortex plays a pivotal role in the default mode network: evidence from a partial correlation network analysis. *Neuroimage* 42, 1178–1184.
- Gilbert, D.T., 2006. If only gay sex caused global warming. *Times*, Los Angeles. July 2.
- Hagmann, P., Cammoun, L., Gigandet, X., Meuli, R., Honey, C.J., Wedeen, V.C., et al., 2008. Mapping the structural core of the human cerebral cortex. *Public Libr. Sci. Biol.* 7, 1479–1493.
- Hassabis, D., Maguire, E.A., 2007. Deconstructing episodic memory with construction. *Trends Cog. Sci.* 11, 299–306.
- Hein, G., Knight, R.T., 2008. Superior temporal sulcus—It's my area: or is it? *J. Cog. Neurosci.* 20, 1–12.
- Kumaran, D., Hassabis, D., Spiers, H.J., Vann, S.D., Vargha-Khadem, F., Maguire, E.A., 2007. Impaired spatial and non-spatial configural learning in patients with hippocampal pathology. *Neuropsychologia* 45, 2699–2711.
- Kumaran, D., Summerfield, J.J., Hassabis, D., Maguire, E.A., 2009. Tracking the emergence of conceptual knowledge during human decision making. *Neuron* 63, 889–901.
- Laird, A.R., Fox, M., Price, C.J., Glahn, D.C., Uecker, A.M., Lancaster, J.L., Turkeltaub, P.E., Kochunov, P., Fox, P.T., 2005. ALE meta-analysis: controlling the false discovery rate and performing statistical contrasts. *Hum. Brain Mapp.* 25, 155–164.
- Laird, A.R., Robinson, J.L., McMillan, K.M., Tordesillas-Gutierrez, D., Moran, S.T., Gonzales, S.M., Ray, K.L., Franklin, C., Glahn, D.C., Fox, P.T., Lancaster, J.L., 2010. Comparison of the disparity between Talairach and MNI coordinates in functional neuroimaging data: validation of the Lancaster transform. *Neuroimage* 51, 677–683.
- Lancaster, J.L., Tordesillas-Gutierrez, D., Martinez, M., Salinas, F., Evans, A., Zilles, K., Mazziotta, J.C., Fox, P.T., 2007. Bias between MNI and Talairach coordinates analyzed using the ICBM-152 brain template. *Hum. Brain Mapp.* 28, 1194–1205.
- Levine, B., Black, S.E., Cabeza, R., Sinden, M., McIntosh, A.R., Toth, J.P., Tulving, E., Stuss, D.T., 1998. Episodic memory and the self in a case of isolated retrograde amnesia. *Brain* 121, 1951–1973.
- Levine, B., Freedman, M., Dawson, D., Black, S., Stuss, D.T., 1999. Ventral frontal contribution to self-regulation: convergence of episodic memory and inhibition. *NeuroCase* 5, 263–275.
- Mar, R.A., 2011. The neural bases of social cognition and story comprehension. *Annu. Rev. Psychol.* 62, 103–134.
- Martin, A., 2007. The representation of object concepts in the brain. *Ann. Rev. Psychol.* 58, 25–45.
- Mason, M.F., Norton, M.I., Van Horn, J.D., Wegner, D.M., Grafton, S.T., Macrae, C.N., 2007. Wandering minds: the default network and stimulus-independent thought. *Science* 315, 393–395.
- Mitchell, J.P., 2008. Activity in right temporo-parietal junction is not selective for theory-of-mind. *Cer. Cortex.* 18, 262–271.
- Mitchell, J.P., 2009. Inferences about mental states. *Phil. Trans. R. Soc. B.* 364, 1309–1316.
- Moscovitch, M., Nadel, L., Winocur, G., Gilboa, A., Rosenbaum, R.S., 2006. The cognitive neuroscience of remote episodic, semantic and spatial memory. *Curr. Opin. Neurobiol.* 16, 179–190.
- Perry, D., Hendler, T., Shamay-Tsoory, S.G., 2011. Projecting memories: the role of the hippocampus in emotional mentalizing. *NeuroImage* 54, 1669–1676.
- Rabin, J.S., Gilboa, A., Stuss, D.T., Mar, R.A., Rosenbaum, R.S., 2010. Common and unique neural correlates of autobiographical memory and theory of mind. *J. Cog. Neurosci.* 22, 1095–1111.
- Raichle, M.E., 2010. Two views of brain function. *Trends Cog. Sci.* 14, 180–190.
- Rosenbaum, R.S., Stuss, D., Levine, B., Tulving, E., 2007. Theory of mind is independent of episodic memory. *Science* 318, 1257.
- Saxe, R., Kanwisher, N., 2003. People thinking about thinking people: the role of the temporo-parietal junction in theory of mind. *Neuroimage* 19, 1835–1842.
- Schacter, D.L., Addis, D.R., Buckner, R.L., 2008. Episodic simulation of future events: concepts, data, and applications. *Ann. NY Acad. Sci.* 1124, 39–60.
- Shulman, G.L., Fiez, J.A., Corbetta, M., Buckner, R.L., Miezin, F.M., Raichle, M.E., et al., 1997. Common blood flow changes across visual tasks: II. Decreases in cerebral cortex. *J. Cog. Neurosci.* 9, 648–663.
- Simmons, W.K., Reddish, M., Bellgowan, P.S.F., Martin, A., 2010. The selectivity and functional connectivity of the anterior temporal lobes. *Cereb. Cortex* 20, 813–825.
- Spreng, R.N., Grady, C., 2010. Patterns of brain activity supporting autobiographical memory, prospection and theory-of-mind and their relationship to the default mode network. *J. Cog. Neurosci.* 22, 1112–1123.
- Spreng, R.N., Mar, R.A., Kim, A.S.N., 2009. The common neural basis of autobiographical memory, prospection, navigation, theory of mind and the default mode: a quantitative meta-analysis. *J. Cog. Neurosci.* 21, 489–510.
- St. Jacques, P.L., Conway, M.A., Lowder, M.W., Cabeza, R., 2011. Watching My Mind Unfold versus Yours: An fMRI Study Using a Novel Camera Technology to Examine Neural Differences in Self-projection of Self versus Other Perspectives. *J. Cog. Neurosci.* 23, 1275–1284.
- Van Dijk, K.R.A., Hedden, T., Venkataraman, A., Evans, K.C., Lazar, S.W., Buckner, R., 2009. Intrinsic functional connectivity as a tool for human connectomics: theory, properties, and optimization. *J. Neurophysiol.* 103, 297–321.
- Van Essen, D.C., 2005. A Population-Average, Landmark- and Surface-based (PALS) atlas of human cerebral cortex. *Neuroimage* 28, 635–662.
- Vincent, J.L., Kahn, I., Snyder, A.Z., Raichle, M.E., Buckner, R.L., 2008. Evidence for a frontoparietal control system revealed by intrinsic functional connectivity. *J. Neurophysiol.* 100, 3328–3342.
- Zahn, R., Moll, J., Krueger, F., Huey, E., Garrido, G., Grafman, J., 2007. Social concepts are represented in the superior anterior temporal cortex. *Proc. Natl Acad. Sci. USA* 104, 6430–6435.